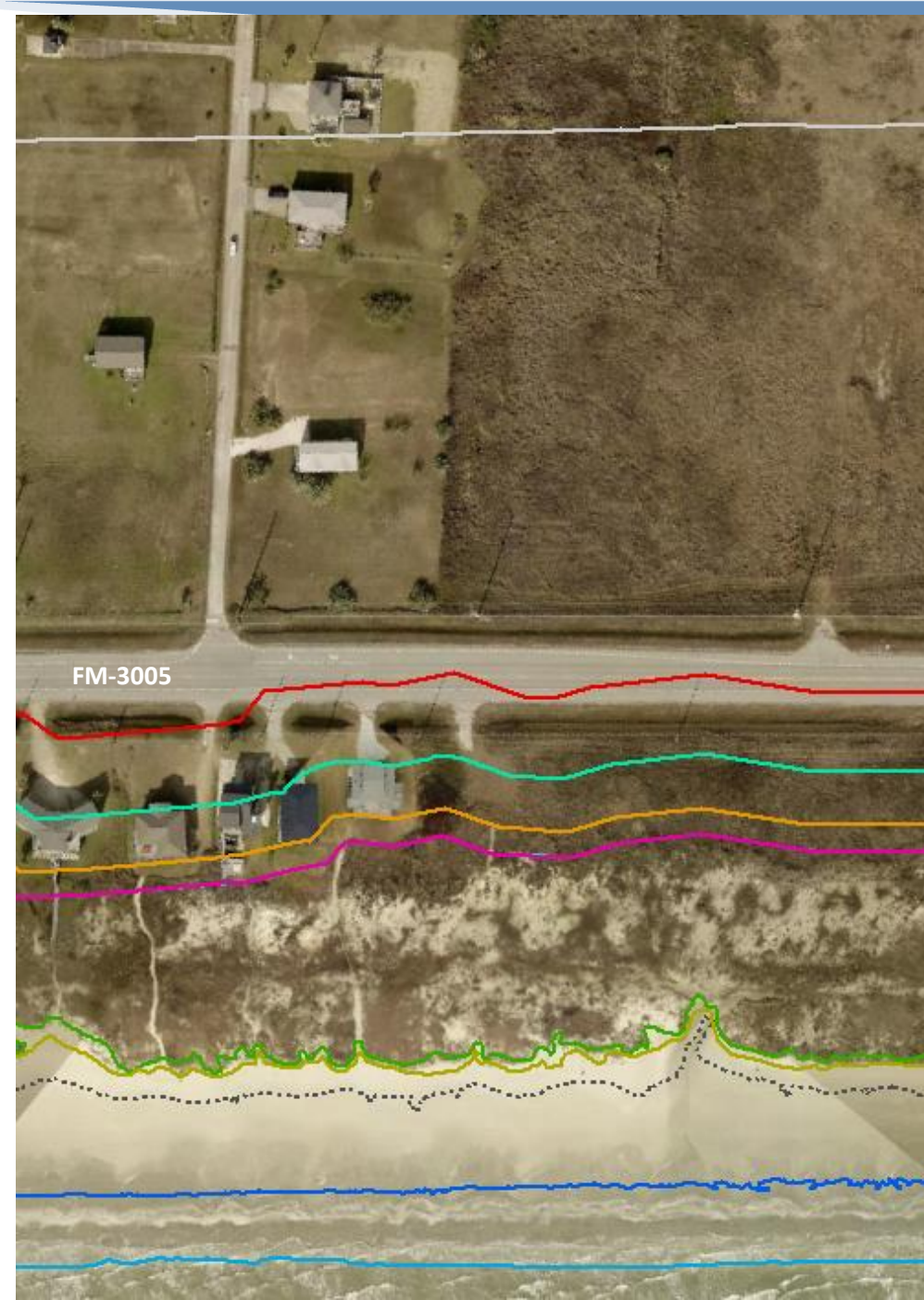




# Line of Vegetation Determination Post-GLO LOV Recission

**City of Galveston**  
Development Services Department  
Coastal Division

August 16, 2022



1,000ft from MHT

Enhanced Construction Zone

+50ft landward of DPL

Dune Protection Line

North Toe of Dune

Line of Vegetation

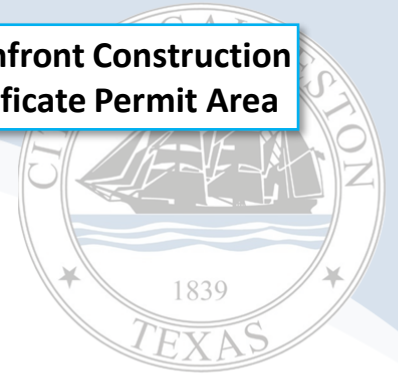
South Toe of Dune

+4ft Contour

Mean High Water

Mean Low Water

Beachfront Construction Certificate Permit Area



Enhanced Construction Zone Area

*Only in Eroding Beach Areas*

Planning Commission Review Area

Critical Dune Area

Dune Conservation Area

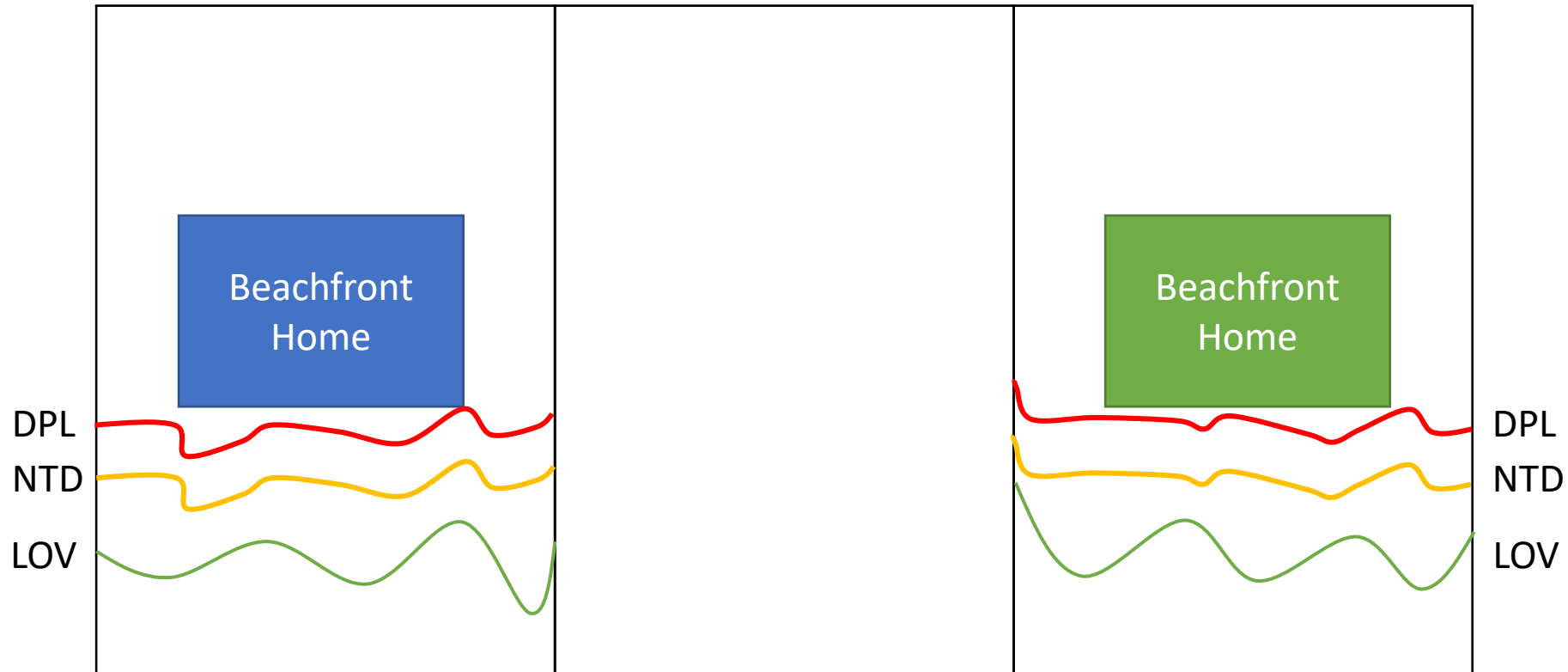
Terminology Illustration

# Beach Profile

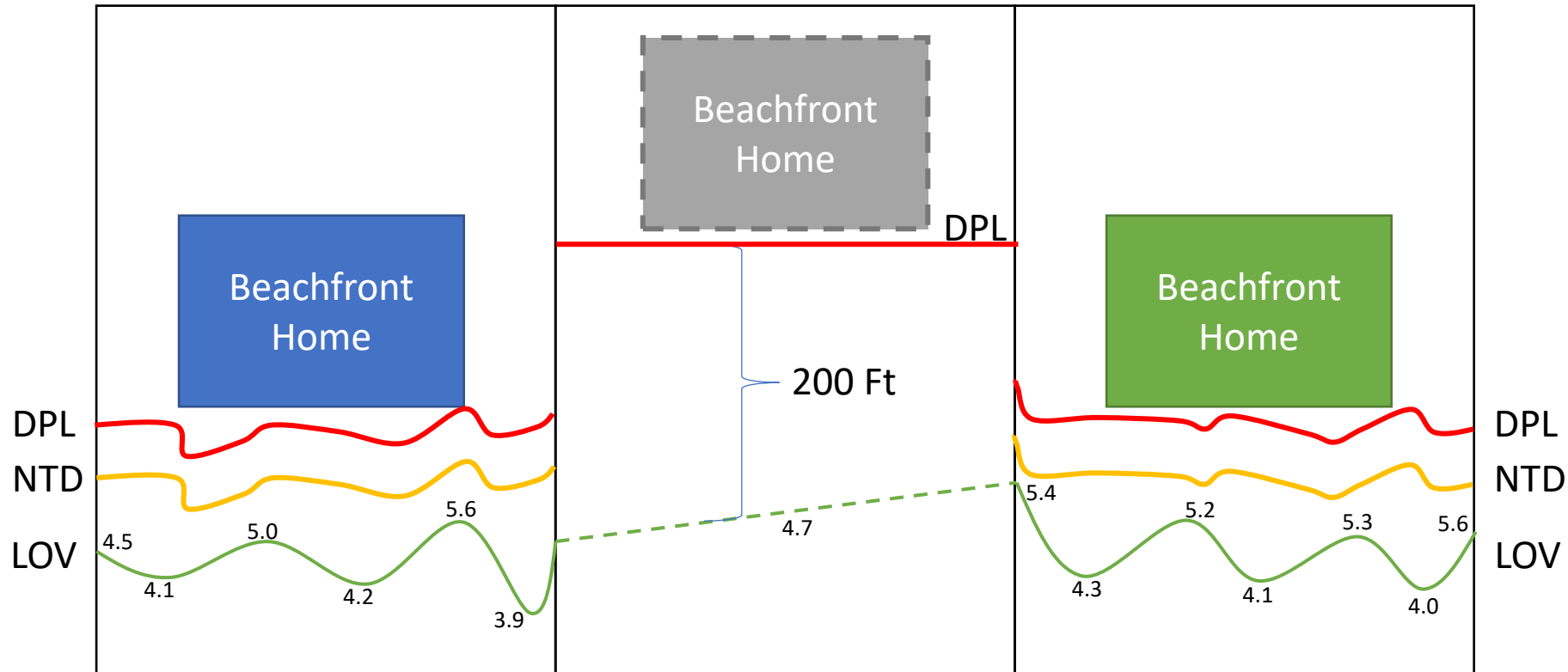


Figure 1.- As the beach retreats, structures prevent foredune formation, which increases the rate of retreat and causes hazardous conditions (from Morton, Paine, and Gibeaut; 1994).

# Determining the Line of Vegetation without the GLO Suspension

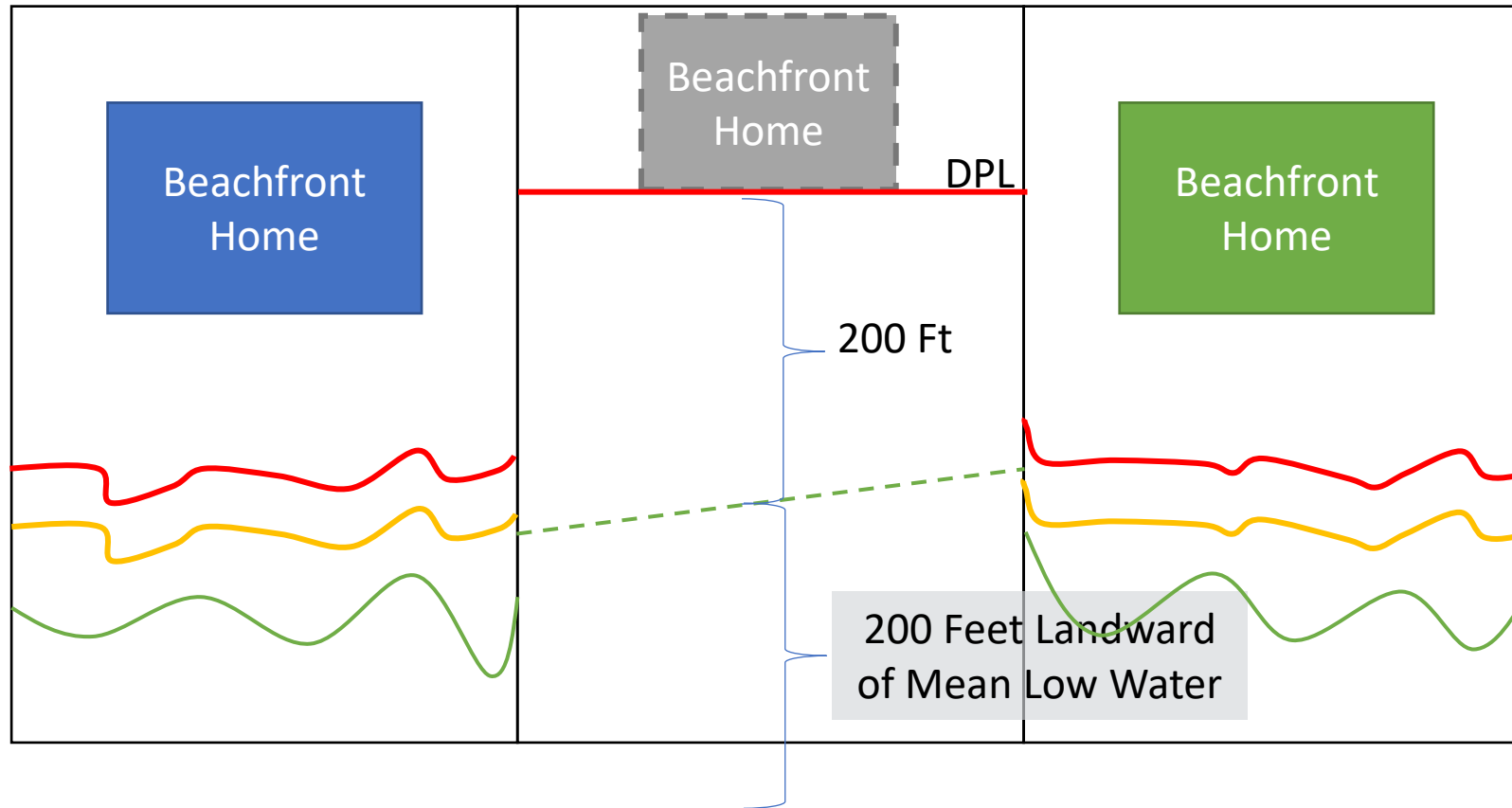


# Determining the Line of Vegetation without the GLO Suspension





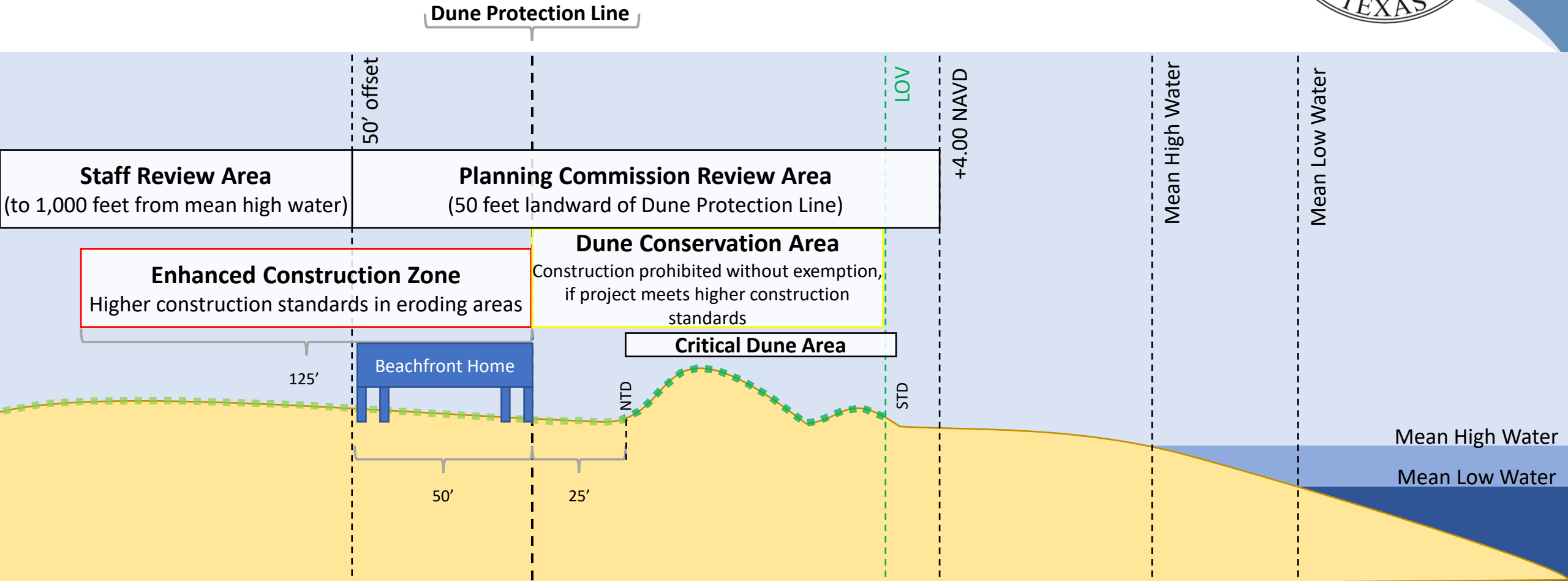
# Determining the Line of Vegetation without the GLO Suspension



*\*Complications may arise if the vegetation is lawn turf or otherwise non-traditional dune vegetation, or if the line of vegetation has been "obliterated" by a storm event or human activity.*



# Terminology Illustration

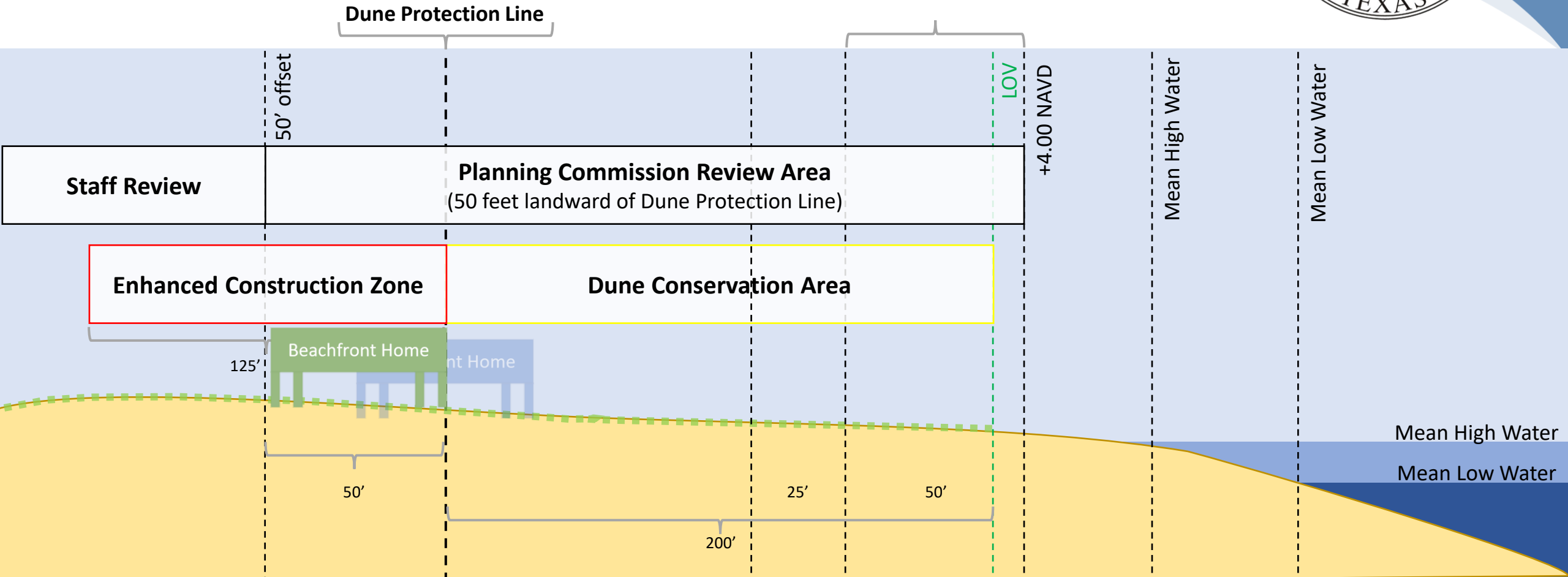




# Terminology Illustration

West of seawall, when dunes are not present, DPL = DCA

Min. width for a dune  
restoration project







# Post-Storm LOV

## No LOV Determined, No Dunes, DPL = DCA

