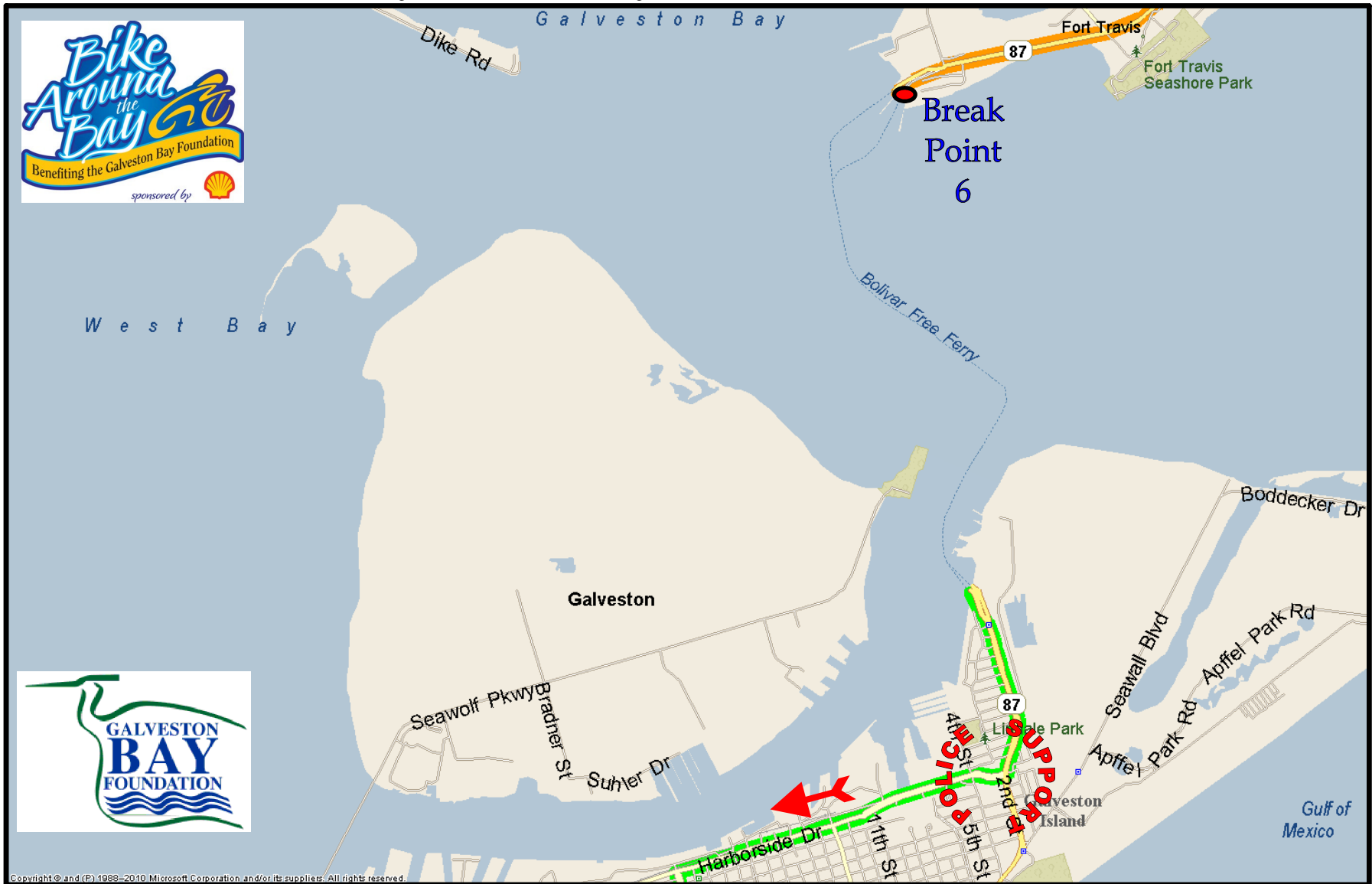


Bike Around the Bay - Saturday



The Bolivar Ferry will off-load riders in Galveston. Riders will take HWY 87 (also known as Ferry Road) to Harborside Drive, and see all of the Cruise Line ships along the West Bay.

Legend	 Direction of Riders
--------	---

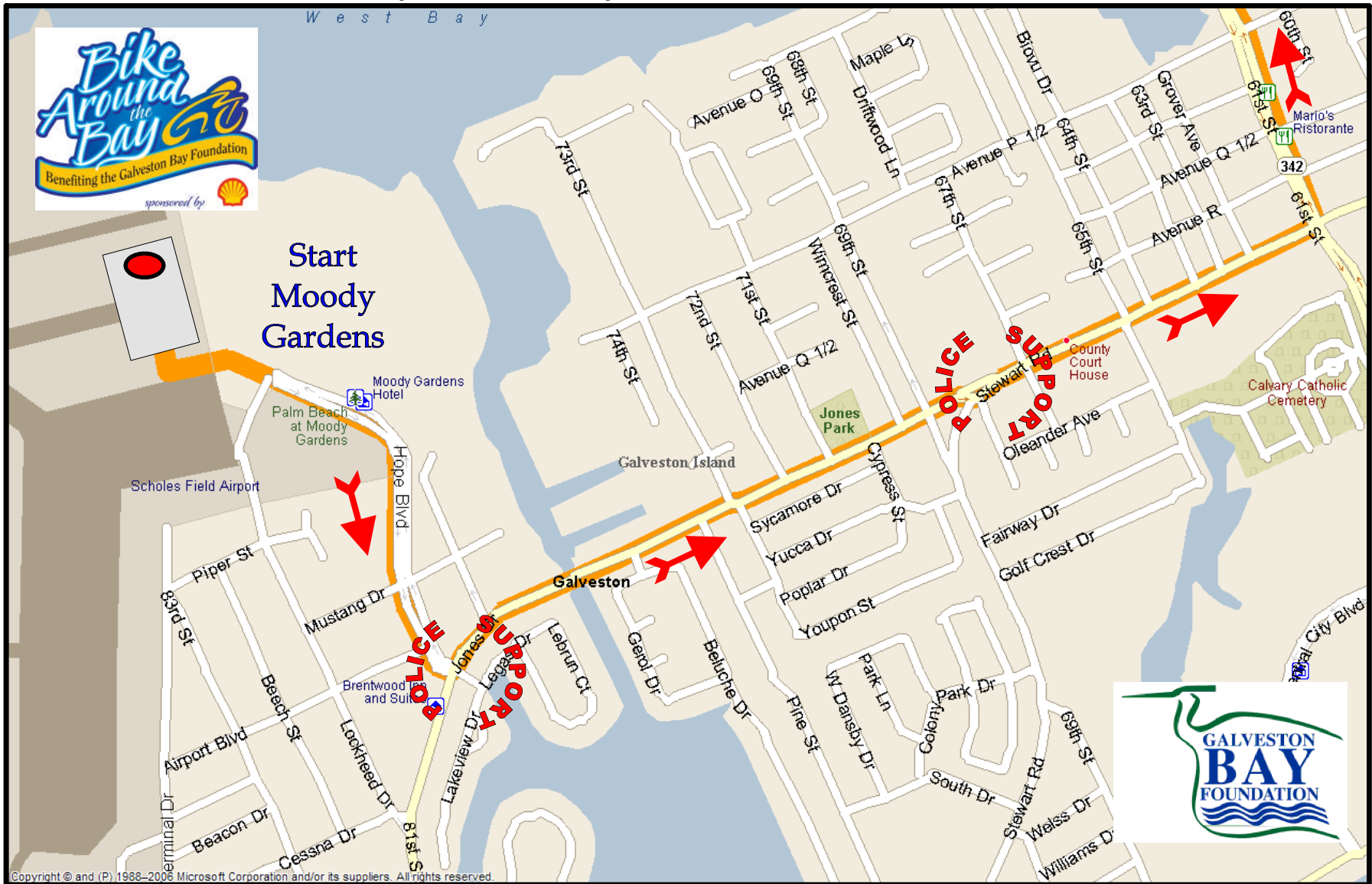
Bike Around the Bay - Saturday



Riders will turn left on 25th Street, and then turn right on Seawall Blvd. (A lane is coned for cyclists). The Finish Line is returning to Moody Gardens. Distance from docks to Finish Line = 9.6 miles.

Legend	 Direction of Riders
--------	---

Bike Around the Bay - Sunday



Riders will leave Moody Gardens at 7:30 am. Riders will stop at the Target Shopping Center and stage for a waterfall start across the I-45 Causeway.

Legend	 Direction of Riders
--------	---

Bike Around the Bay - Sunday



Riders will all start as a large group from the Target Parking Lot. A Crash Truck will follow and guard the last rider.

Legend	 Direction of Riders
--------	---

Bike Around the Bay - Sunday



Police escort will be provided across the I-45 Causeway. Riders will stay on the feeder road of I-45 until the last entrance. 2 lanes are available for riders.

Legend  Direction of Riders